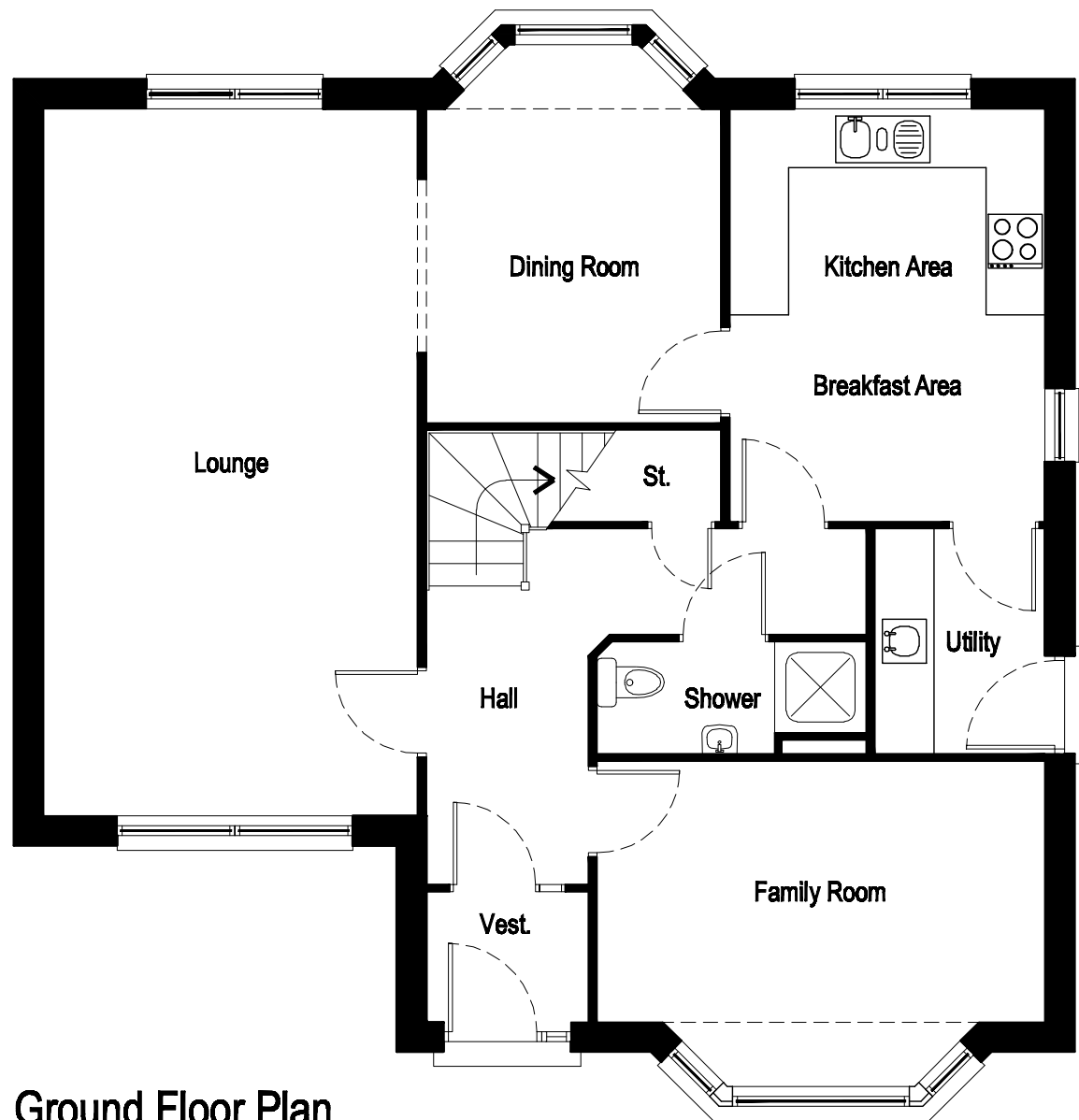


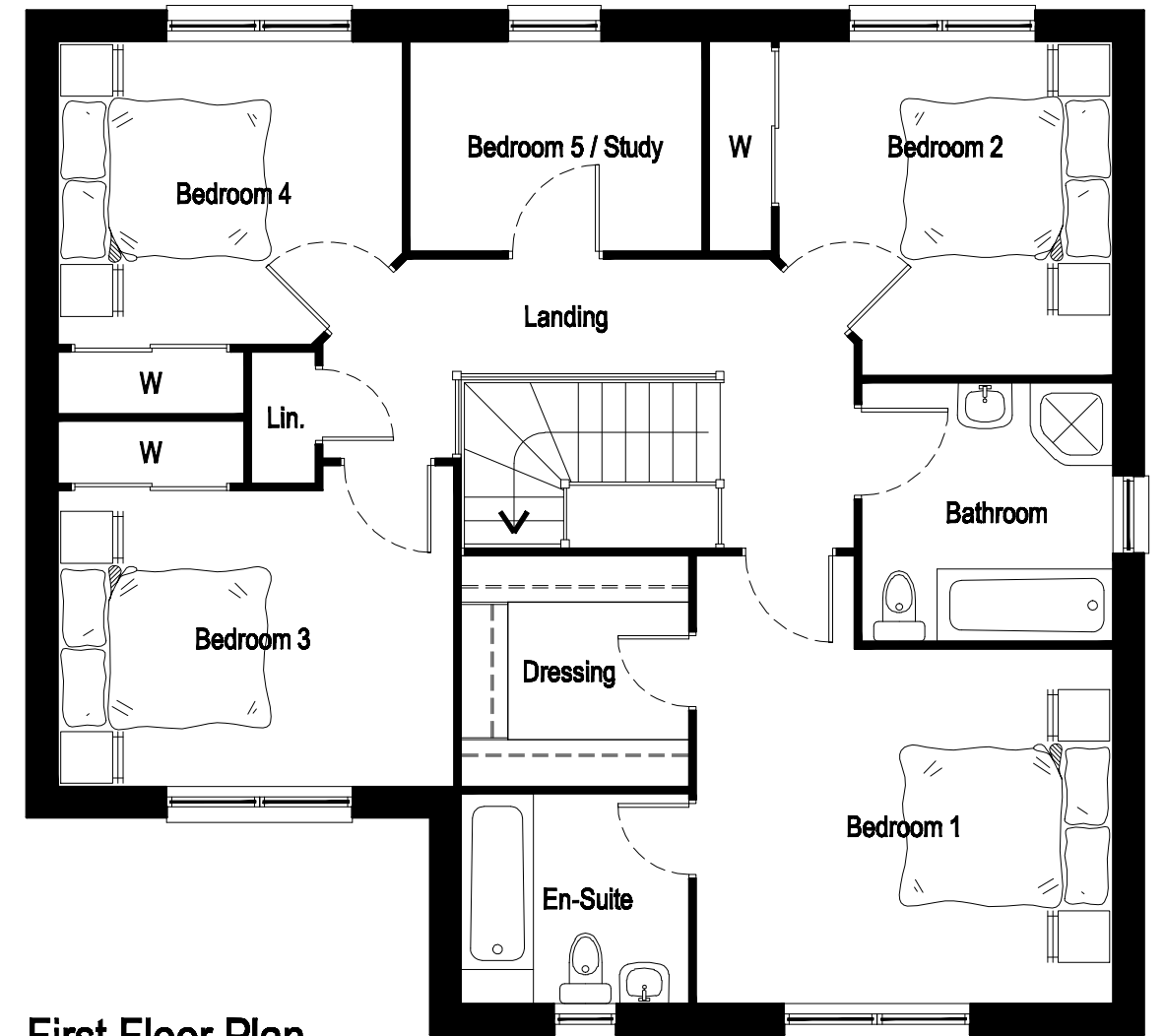
Oak Room Sizes:-

Lounge	7170x3780mm	(23'6"x12'5")
Dining	3170x2970mm	(10'5"x9'9")
Family	4530x2630mm	(14'10"x8'7")
Kitchen/Breakfast	4175x3180mm	(13'8"x10'5")
Utility	2265x1700mm	(7'5"x5'7")
Shower	2710x1115mm	(8'11"x3'8")

Bedroom 1	4000x3400mm	(13'1"x11'2")
Dressing	2200x2170mm	(7'3"x7'1")
En-Suite 1	2170x2000mm	(7'1"x6'7")
Bedroom 2	3200x3200mm	(10'6"x10'6")
Bedroom 3	3800x2830mm	(12'6"x9'3")
Bedroom 4	3300x2900mm	(10'10"x9'6")
Bedroom 5/Study	2800x2000mm	(9'2"x6'7")
Bathroom	2470x2400mm	(8'1"x7'10")



Ground Floor Plan



First Floor Plan