



AFFRIC

The Maltings, Muir of Ord
Tel: 01 349 869104
www.glenhomes.co.uk



Ground Floor Plan

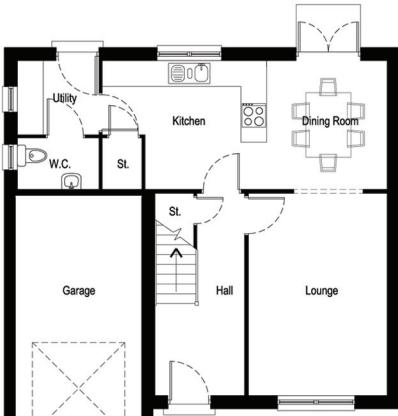
Lounge	5370x3180mm	(17'7"x10'5")
Dining Room	2665x3552mm	(8'9"x11'8")
Kitchen/Breakfast/Family	4220x4098mm	(13'10"x13'5")
Utility	1698x1605mm	(5'7"x5'3")
WC	1769x1520mm	(5'10"x5'0")
Bedroom 1	3600x3000mm	(11'10"x9'10")
En-Suite	1970x1290mm	(6'6"x4'3")
Bedroom 2	3550x2600mm	(11'8"x8'6")
Bedroom 3	3200x2920mm	(10'6"x9'7")
Study/bedroom 4	2350x2070mm	(7'9"x6'9")
Bathroom	1970x1700mm	(6'6"x5'7")



First Floor Plan

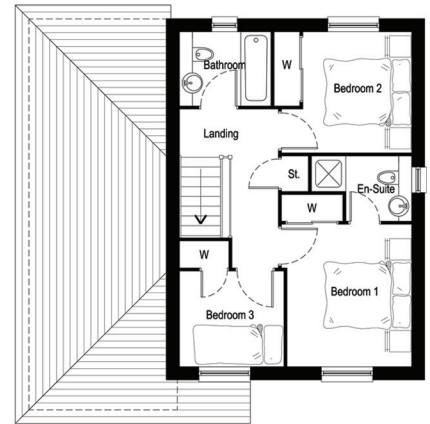


ORRIN



Ground Floor Plan

Lounge	4680x3195mm	(15'4"x10'6")
Kitchen/Dining	6600x2970mm	(21'8"x9'9")
Utility	1870x1700mm	(6'2"x5'7")
WC	1870x1170mm	(6'2"x3'10")
Bedroom 1	3290x2870mm	(10'10"x9'5")
En-Suite	2300x1490mm	(7'7"x4'11")
Bedroom 2	2790x2500mm	(9'2"x8'2")
Bedroom 3	2400x2200mm	(7'10"x7'3")
Bathroom	2100x1700mm	(6'11"x5'7")
Garage	5380x2920mm	(17'8"x9'7")



First Floor Plan

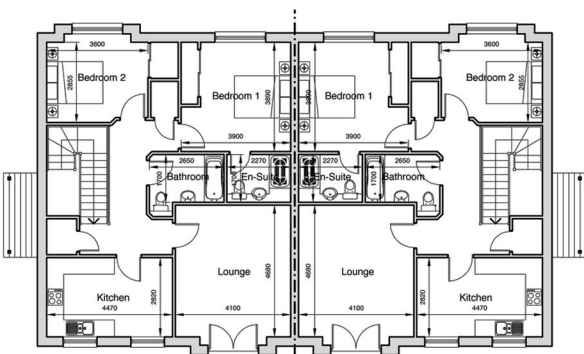
FIRST FLOOR APARTMENT

Lounge:	4100x4680m
Kitchen/Dining:	4470x2820mm
Bathroom:	1700x2650mm
Bedroom 1:	3900x3890mm
En-Suite:	1700x2270mm approx
Bedroom 2:	3600x2660mm

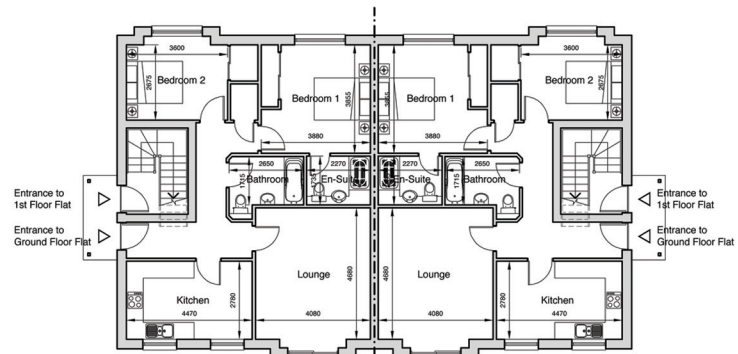
GROUND FLOOR APARTMENT

Lounge:	4080x4680mm
Kitchen/Dining:	4470x2780mm
Bathroom:	1720x2650mm
Bedroom 1:	3880x3860mm
En-Suite:	1740x2270mm
Bedroom 2:	2680x3600mm

MEGA APARTMENTS



First Floor Plan



Ground Floor Plan