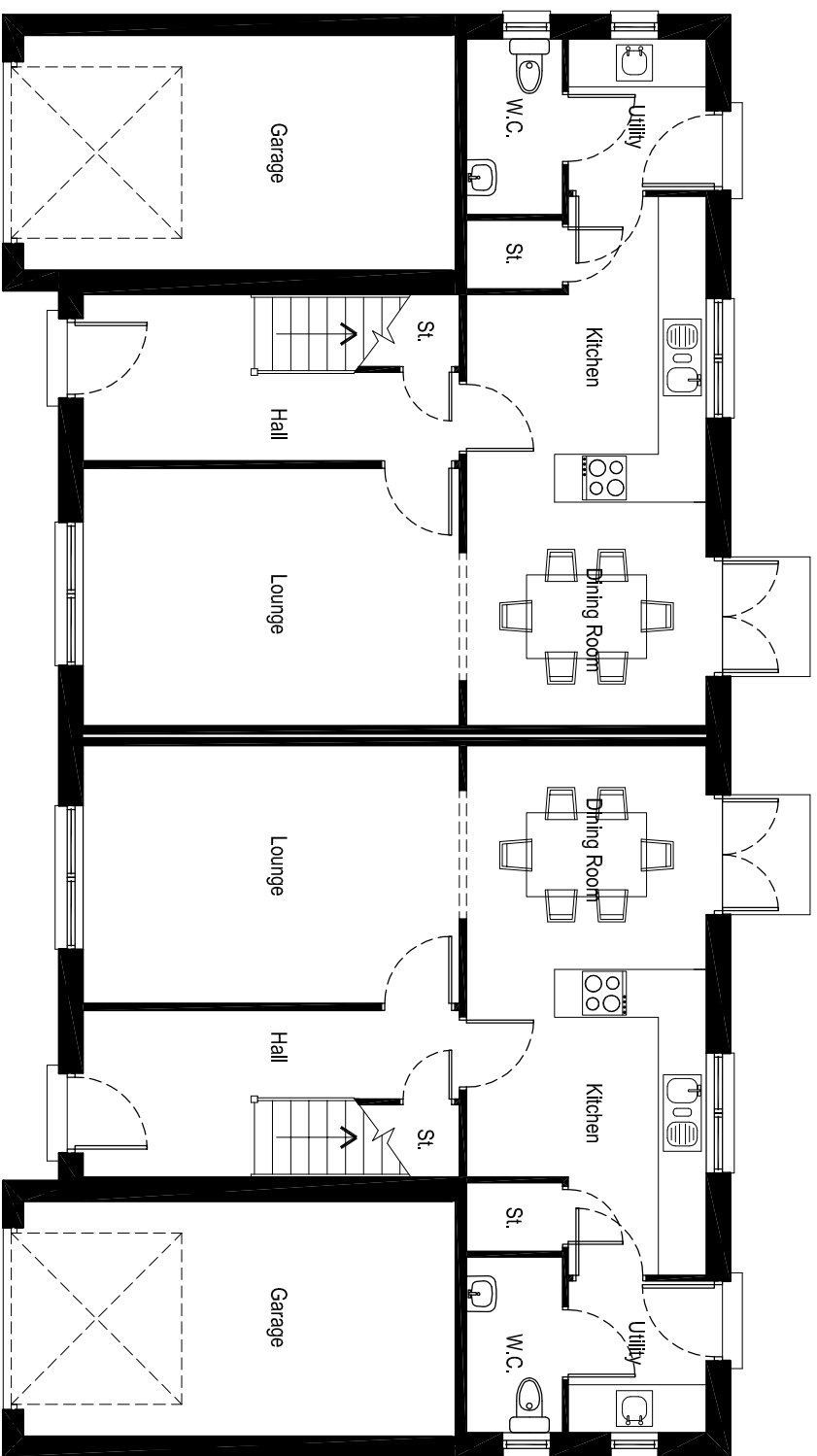
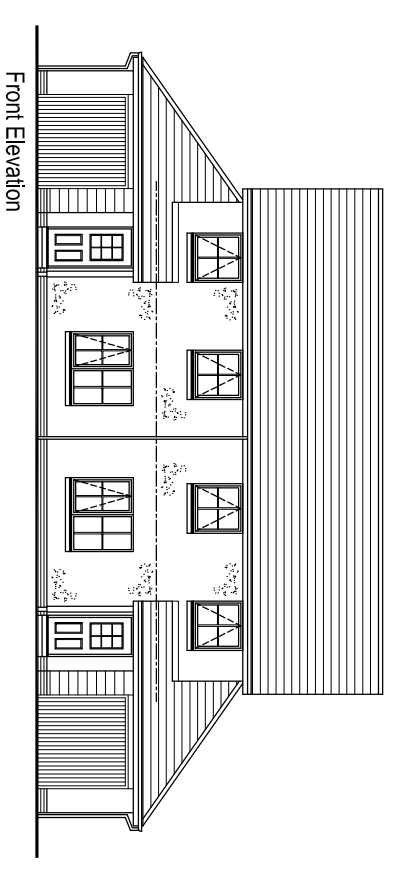


First Floor Plan



Ground Floor Plan

Lounge	4680x3195mm	(15'4"x10'6")
Kitchen/Dining	6600x2970mm	(21'8"x9'9")
Utility	1870x1700mm	(6'2"x5'7")
WC	2170x1170mm	(7'1"x3'10")
Bedroom 1	3290x2870mm	(10'10"x9'5")
En-Suite	2300x1490mm	(7'7"x4'11")
Bedroom 2	2790x2500mm	(9'2"x8'2")
Bedroom 3	2400x2200mm	(7'10"x7'3")
Bathroom	2100x1700mm	(6'11"x5'7")
Garage	5380x2920mm	(17'8"x9'7")



Front Elevation