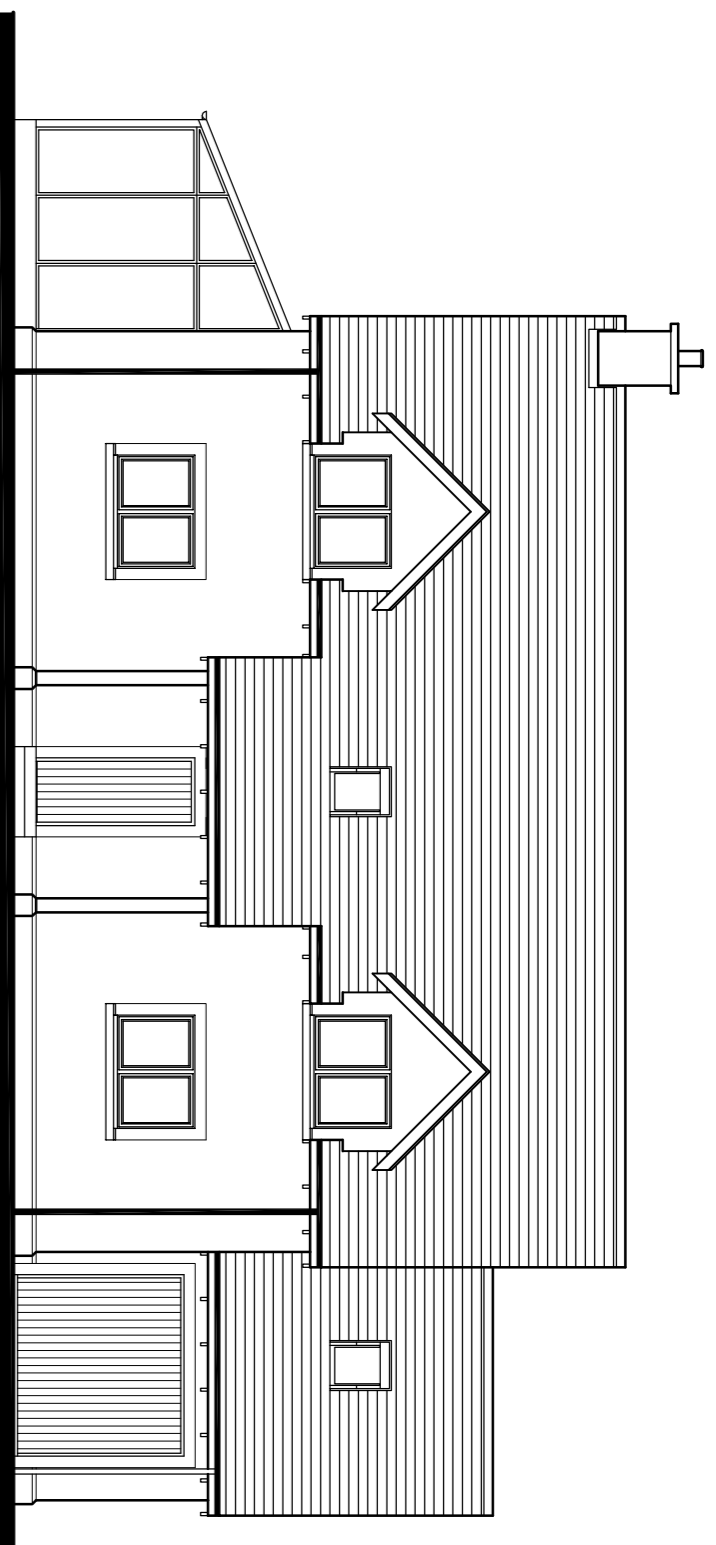
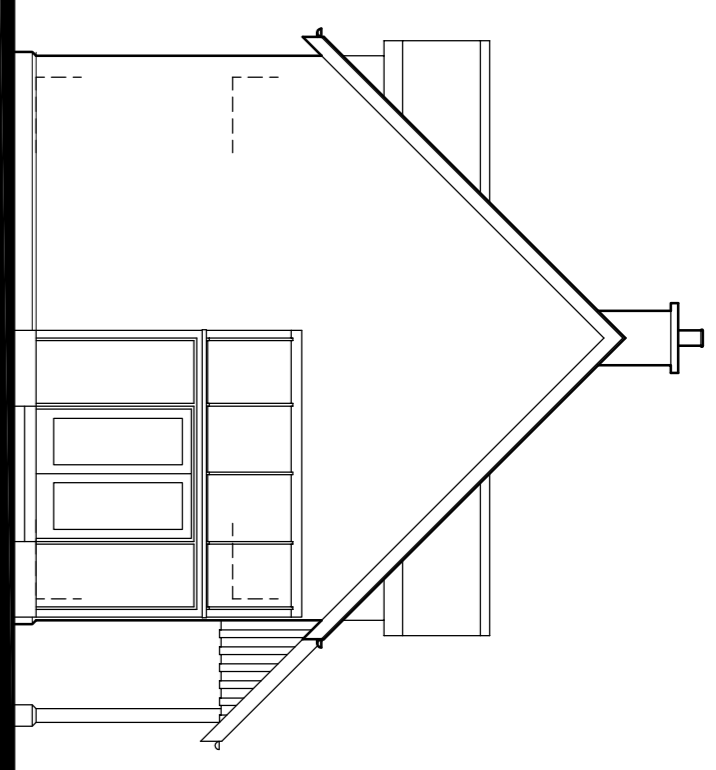


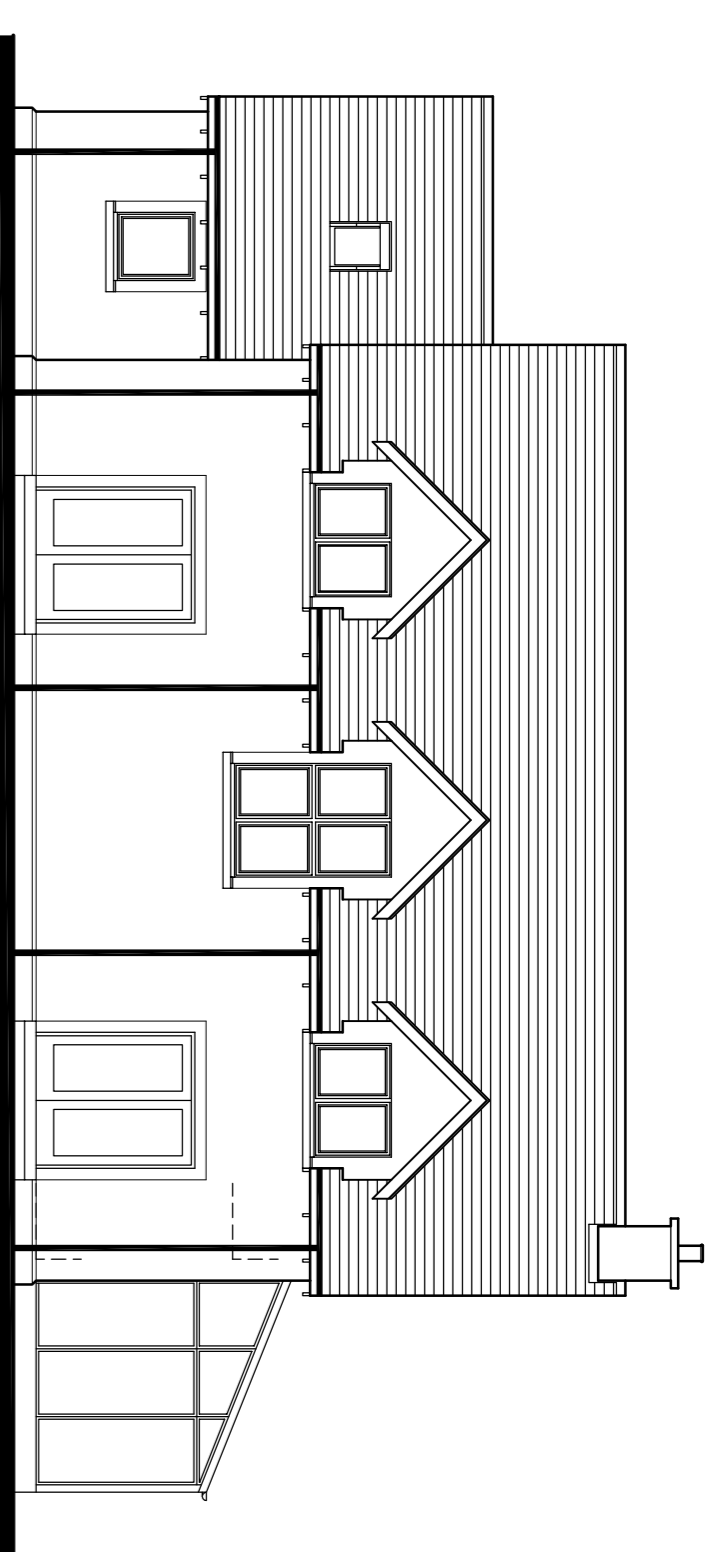
Gable Elevation



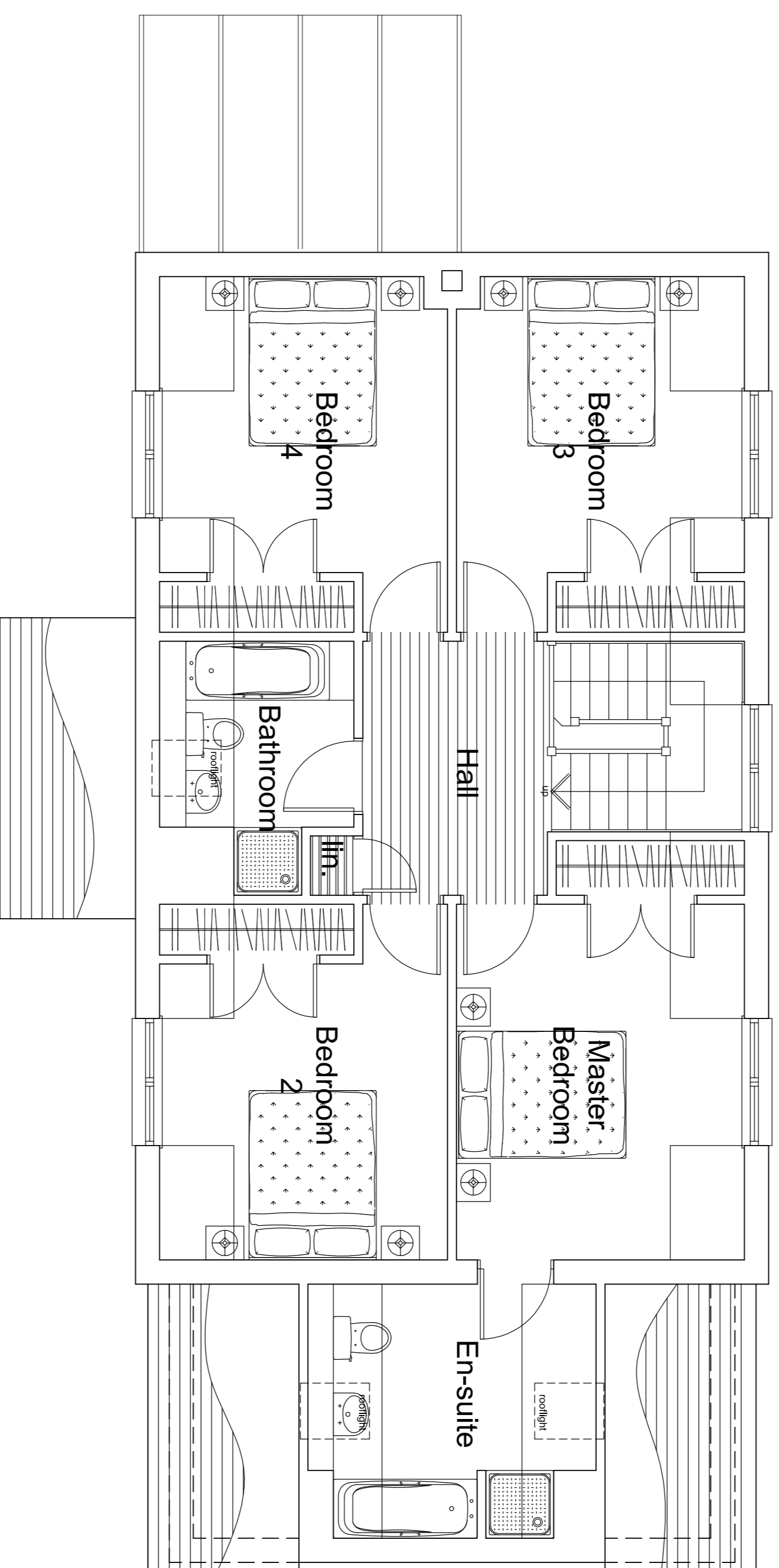
Entrance (East) Elevation



Gable Elevation

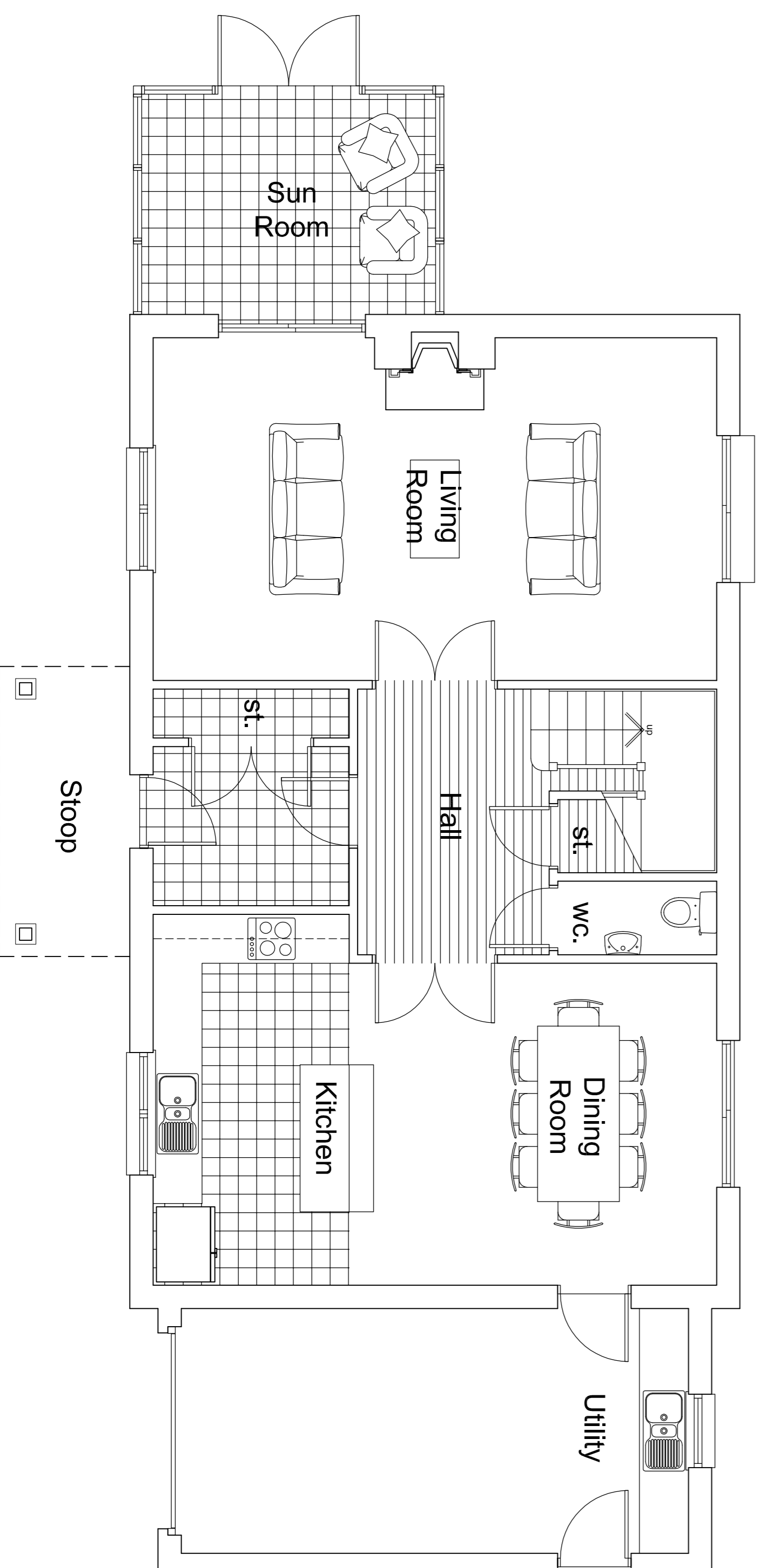


Garden (West) Elevation



First Floor Plan (Gross Internal Floor Area - 90 sqm)
 Master Bedroom 3.40 x 4.20
 Bedroom 2 3.50 x 3.40
 Bedroom 3 3.50 x 3.40
 Bedroom 4 3.50 x 3.40
 Bathroom 2.30 x 2.20

- Finishes**
- Walls Anthracite brick/plinth course with harling painted to approved colour. Smooth bands to windows and doors.
 - Roof Slate tile. Dark stained timber fascias and sloping soffits. Black tv goods.
 - Windows High performance timber double glazed casement windows with dark stain finish.



House Type B North
Ground Floor Plan (Gross Internal Floor Area - 99sqm*)
 Living Room 6.90 x 4.20
 Kitchen / Dining 6.90 x 3.95
 Garage / Utility 6.20 x 3.00
 *Sun Room 3.60 x 2.70